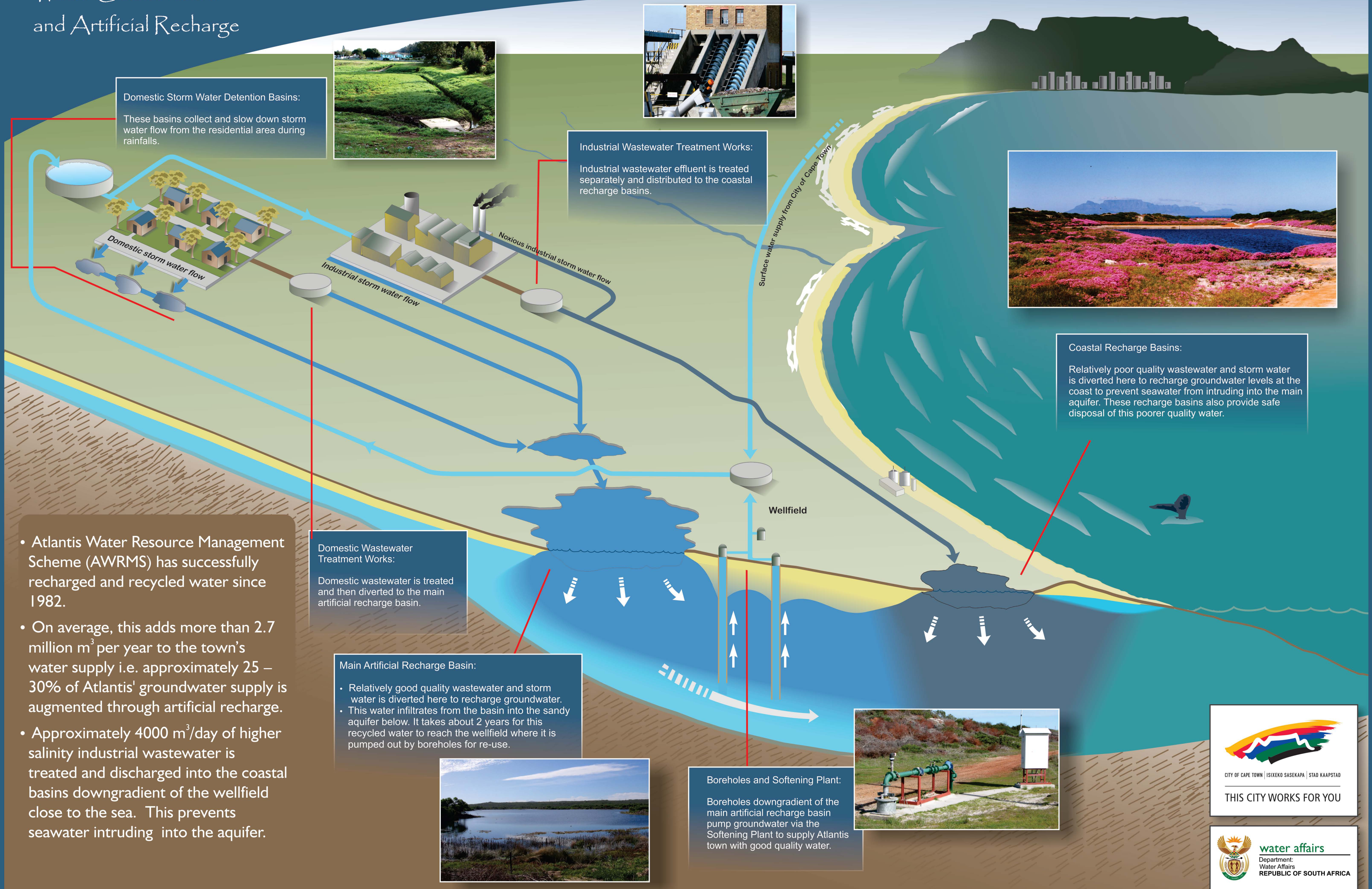


Hidden Treasure of
Water Conservation
and Artificial Recharge

Atlantis Water Resource Management Scheme



Domestic Storm Water Detention Basins:
These basins collect and slow down storm water flow from the residential area during rainfalls.



Industrial Wastewater Treatment Works:
Industrial wastewater effluent is treated separately and distributed to the coastal recharge basins.



Coastal Recharge Basins:
Relatively poor quality wastewater and storm water is diverted here to recharge groundwater levels at the coast to prevent seawater from intruding into the main aquifer. These recharge basins also provide safe disposal of this poorer quality water.

- Atlantis Water Resource Management Scheme (AWRMS) has successfully recharged and recycled water since 1982.
- On average, this adds more than 2.7 million m³ per year to the town's water supply i.e. approximately 25 – 30% of Atlantis' groundwater supply is augmented through artificial recharge.
- Approximately 4000 m³/day of higher salinity industrial wastewater is treated and discharged into the coastal basins downgradient of the wellfield close to the sea. This prevents seawater intruding into the aquifer.

Domestic Wastewater Treatment Works:
Domestic wastewater is treated and then diverted to the main artificial recharge basin.

Main Artificial Recharge Basin:

- Relatively good quality wastewater and storm water is diverted here to recharge groundwater.
- This water infiltrates from the basin into the sandy aquifer below. It takes about 2 years for this recycled water to reach the wellfield where it is pumped out by boreholes for re-use.



Boreholes and Softening Plant:
Boreholes downgradient of the main artificial recharge basin pump groundwater via the Softening Plant to supply Atlantis town with good quality water.

